

Littlemore Design

KITCHENS ~ VANITIES ~ CABINETS
www.littlemoredesign.com.au

HANDLE RANGE

F133 Anodised Aluminium Oval Bow Handle (16mm wide)



Colours: Matt Aluminium, Silver and Gunmetal
Sizes: 128 and 224 (mm C)

D591 Die-cast Zinc Case Handle



Colours: Brushed Nickel
Sizes: 96 and 128 (mm C)

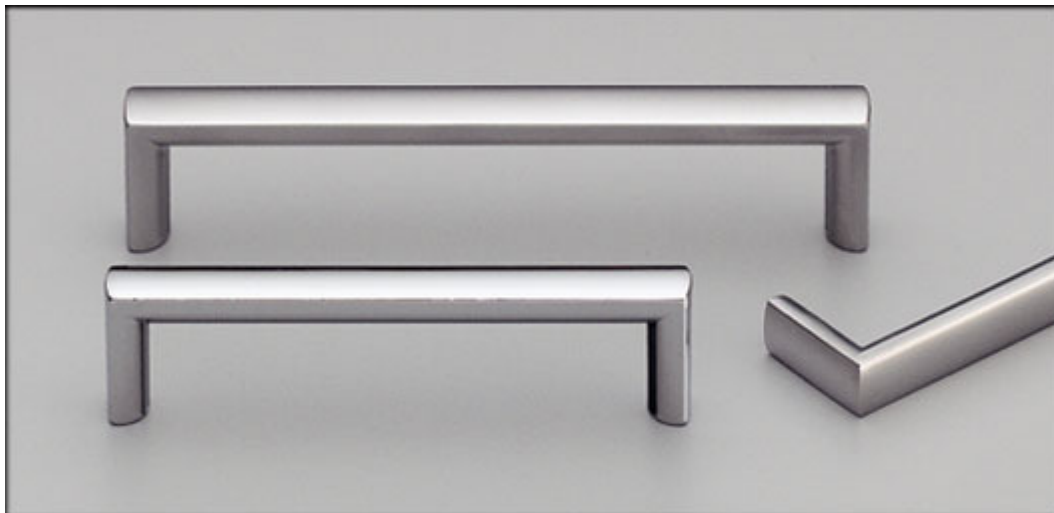
F704 Anodised Aluminium Handle (20mm wide)



Colour: Satin Aluminium

Sizes: 128, 224 and 288 (mm C)

D290 Die-Cast Zinc Handle (12mm wide)



Colours: Satin Chrome, Bright Chrome and Brushed Nickel

Sizes: 96, 128, 160, 240, and 288 (mm C)

L805 Design: Nissen & Gehl (15mm wide)



Colours: Brushed Nickel and Satin Chrome

Sizes: 32, 64, 96, 128, 160, and 224 (mm C)

L809 Design: Hans Sandgren Jakobsen (12mm wide)



Colours: Brushed Nickel and Satin Chrome
Sizes: 128, 160, and 224 (mm C)

S396 Die-Cast Zinc Tapered Bow Handle



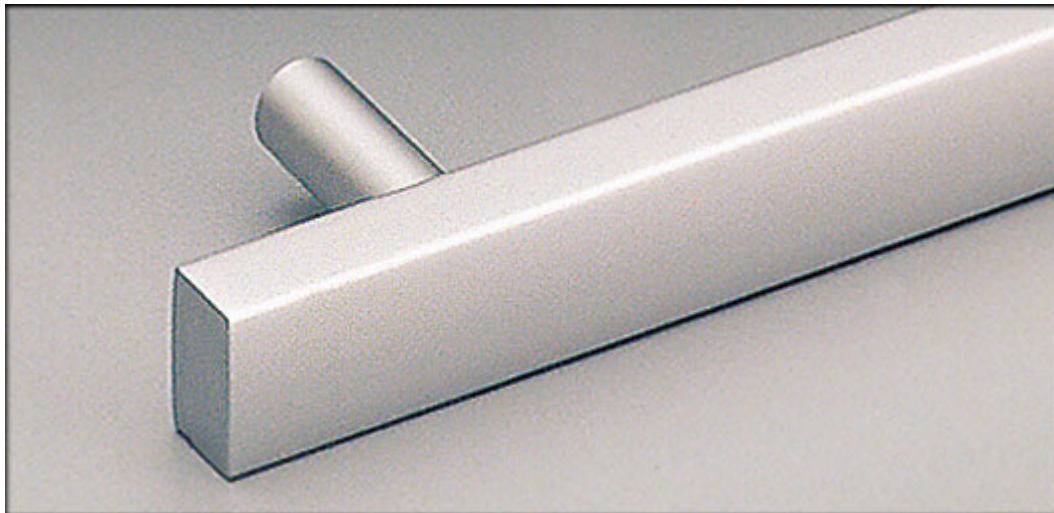
Colours: Bright Chrome, Satin Chrome, Brushed Nickel and Gunmetal
Size: 96, 128, 160 and 224 (mm C)

S209 Die-Cast Zinc Bow Handle (10mm diameter)



Colours: Bright Chrome, Satin Chrome, Brushed Nickel, Gunmetal and Gold
Size: 96 and 128 (mm C) (gold 96mm size only)

S233 Anodised Aluminium Square Handle (13mm wide)



Colours: Matt Alu, Polished Chrome, Brushed Nickel
Sizes: 96, 128, 224, 288, and 352 (mm C)

S266 Anodised Aluminium Handle (16mm wide)



Colours: Matt Alu, Polished Chrome, Brushed Nickel
Sizes: 96, 128, 224, 288, 352, 448, and 544 (mm C)

S609 Stainless Steel D Handle (10mm diameter)



Sizes: 96, 128, 200, 250, 300, 400, 500, 600, 700, and 800 (mm C)

S709 Stainless Steel bow handles (10mm diameter)



Sizes: 96, 128, 160, and 192 (mm C)

F279 Lille Handle (20mm wide)



Colours: Brushed nickel, polished chrome

Sizes: 128, 256, 384, and 480 (mm C)

S201 Polished Chrome Rail Handle (12mm diameter)



Chrome Plated Steel Bar with Brass Legs

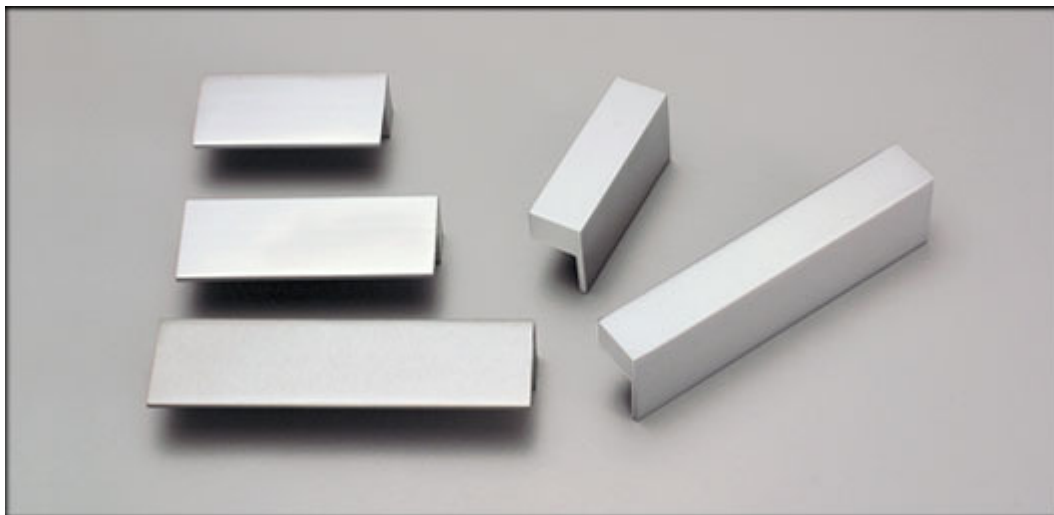
Sizes: 96, 128, 224, 288, 336, 436, 536, 636, and 736 (mm C)

S135 Stainless Steel Rail Handle (12mm diameter)



Sizes: 96, 128, 160, 192, 224, 288, 336, 436, 536, 636, and 736 (mm C)

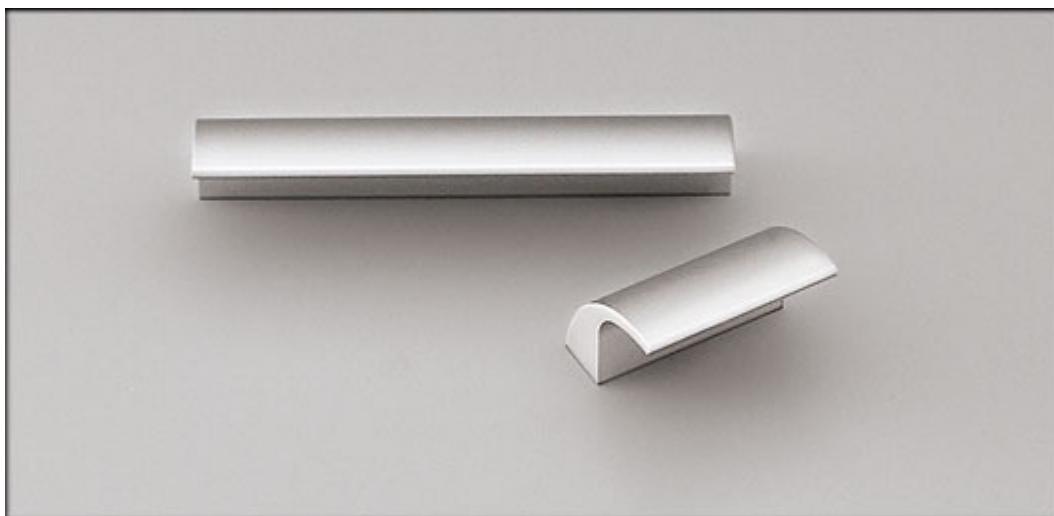
S215 Anodised Aluminium Square Hook Handle (30mm)



Colours: Matt Aluminium

Sizes: 32, 64, 96 and 128 (mm C)

F689 Anodised Aluminium Drop Handle



Sizes: 32, 96, 128 and 224 (mm C)

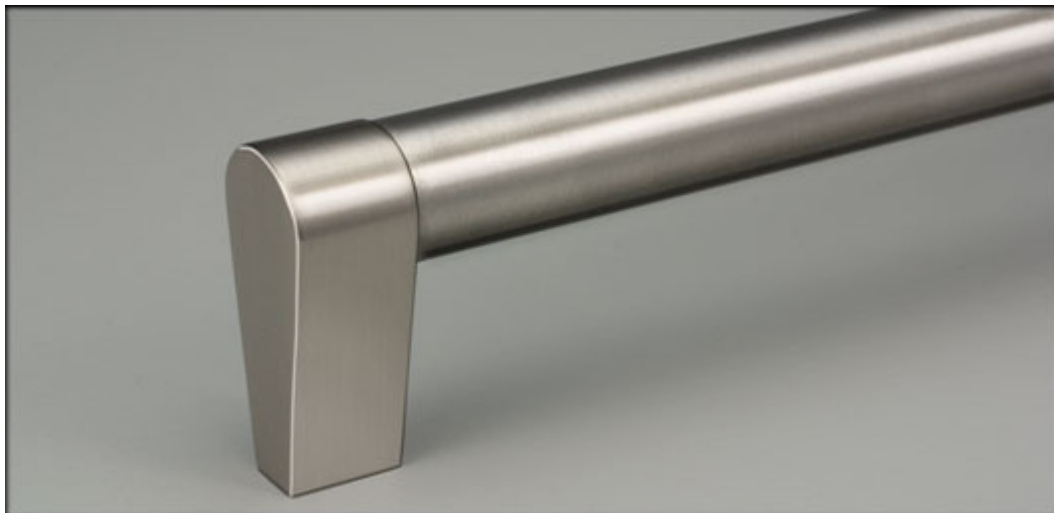
ELITE HANDLE RANGE

“Rimini” E2081 Stainless Steel Handle (22mm wide)



Sizes: 128, 192, 224, 288, 384, 480, 580, 680, and 780 (mm C)

“Parma” E2073 Stainless Steel Handle (18mm diameter)



Sizes: 128, 192, 224, 288, 384, 480, 584, 684, and 784 (mm C)

“Torino” E2085 Stainless Steel Handle (23mm wide)



Sizes: 128, 192, 224, 288, 384, 480, 580, 680, and 780 (mm C)

“Siena” E2106 Stainless Steel Handle (10mm square)



Sizes: 38, 96, 128, 160, 192, 224, 288, 390, and 490 (mm C)

“Astfi” E2118 Stainless Steel Handle (12mm square)



Sizes: 96, 128, 160, 192, 224, 288, 387, 487, 587, 687 and 787 (mm C)

“Biella” E5030 Stainless Steel Handle (15mm square)



Sizes: 128, 160, 192, 224, 288, 352, 385, 485, 585, 685, and 785 (mm C)

“Ispra” E2107 Stainless Steel Handle (8mm diameter)



Sizes: 38, 96, 128, 160, 192, 224, 288, 392, and 492 (mm C)

“Lecco” E5023 Stainless Steel Handle (12.7mm diameter)



Sizes: 96, 128, 160, 192, 224, 288, 352, 384, 480, 587, 687, and 787 (mm C)

“Enna” E2087 Stainless Steel Handle (15.8mm diameter)



Sizes: 128, 160, 192, 224, 288, 384, 484, 584, 684, and 784 (mm C)

“Pavia” E2131 Stainless Steel Handle (20mm oval width)



Sizes: 128, 160, 192, 224, 288, 390, 490, 590, 690, and 790 (mm C)

“Como” E2122 Stainless Steel Handle (14mm flat top, curve under)



Sizes: 96, 128, 160, 192, 224, 288, 392, 492, 592, 692, and 792 (mm C)

“Latina” E2123 Stainless Steel Handle (16.5mm flat top, curve under)



Sizes: 128, 160, 192, 224, 288, 393, 493, 593, 693, and 793 (mm C)

“Roma” E2126 Stainless Steel Handle (22mm flat top, curve under)



Sizes: 128, 160, 192, 224, 288, 390, 490, 590, 690, and 790 (mm C)

“Regio” E2120 Stainless Steel Handle (18mm wide)



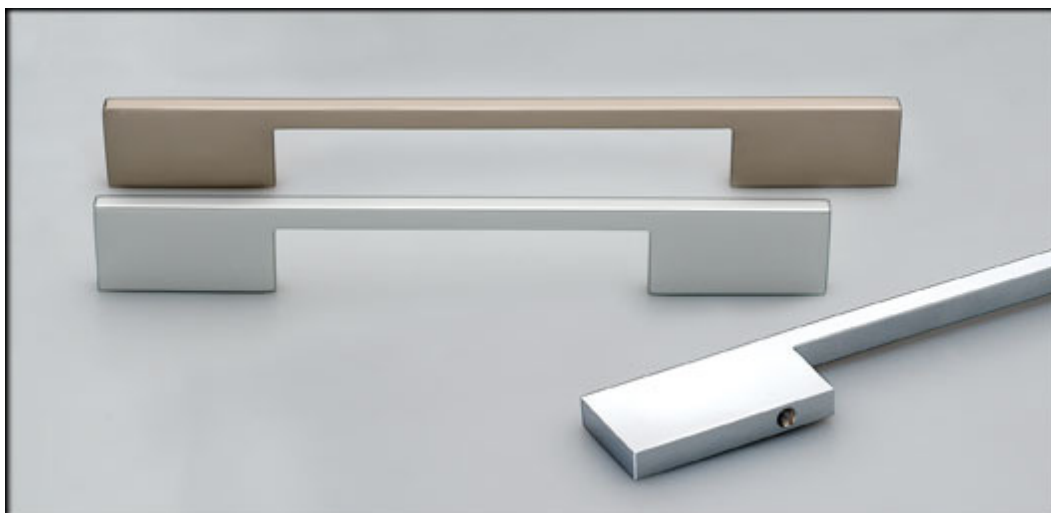
Sizes: 128, 160, 192, 224, 288, 388, 488, 588, 688, and 788 (mm C)

“Pesaro” E2119 Stainless Steel Handle (20mm wide)



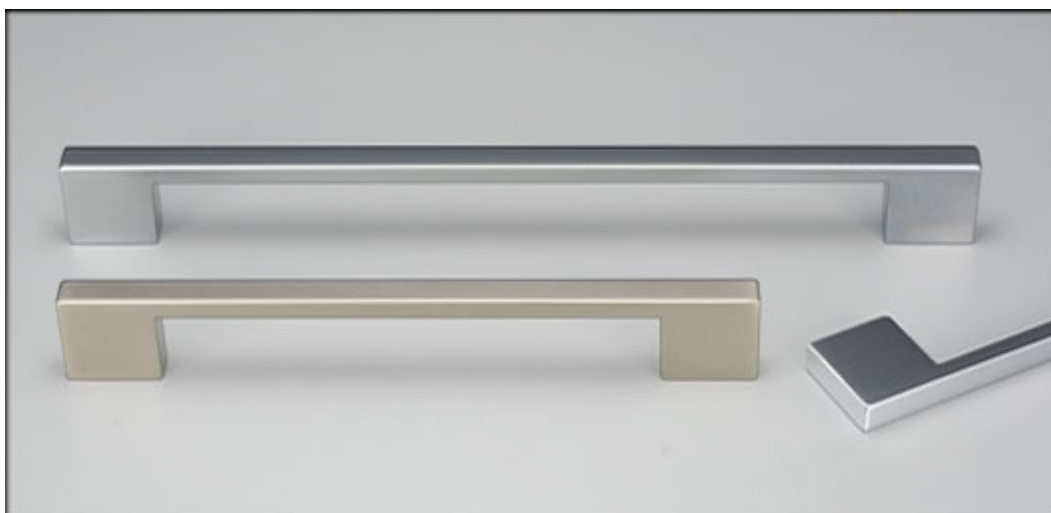
Sizes: 96, 128, 160, 192, 224, 288, 392, 492, 592, 692, and 792 (mm C)

“Sydney” F700 Aluminium Handle (7mm wide)



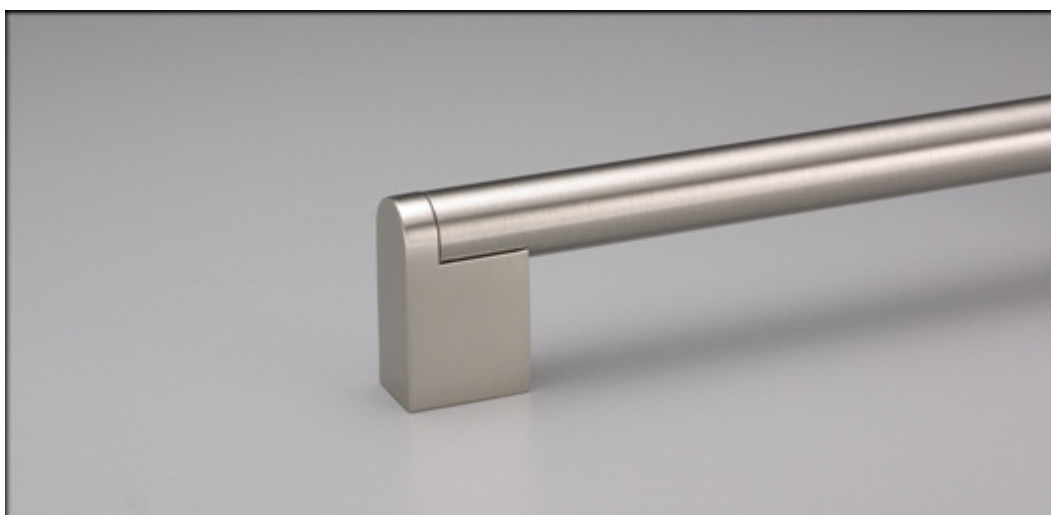
Colours: Polished Chrome, Brushed Nickel and Matt Aluminium
Sizes: 128, 160, 224, and 320 (mm C)

“Mainz” B787 Die-cast Zinc Skinny Handle (8mm wide)



Colours: Bright Chrome, Brushed Nickel and Satin Chrome
Sizes: 96, 128, 160, 192, and 320 (mm C)

D160 Die-cast Zinc Handle



Colours: Bright Chrome and Brushed Nickel
Sizes: 128, 160, 192, 224 and 288 (mm C)

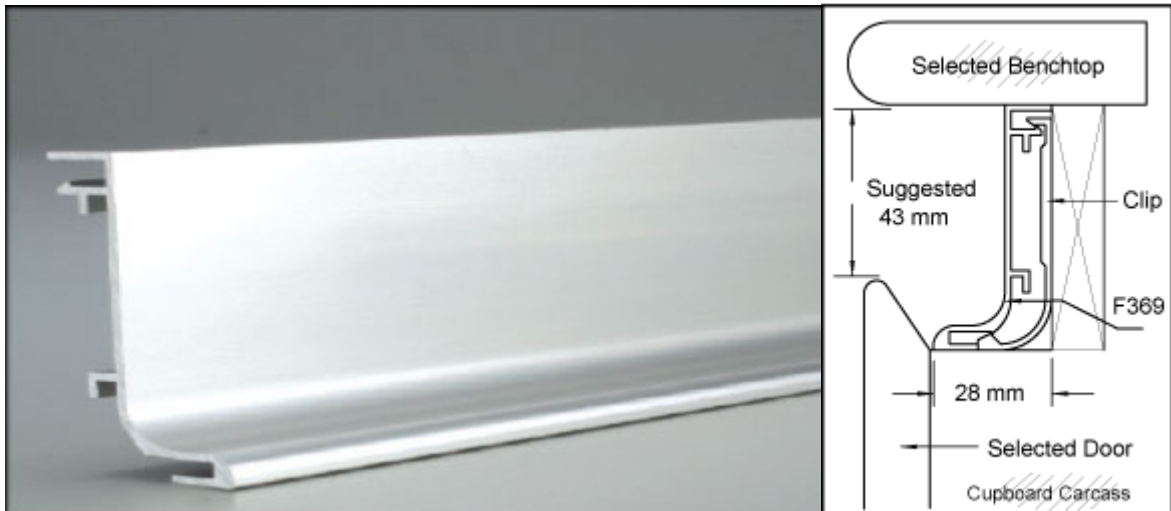
F270 Flush Fitting, Integrated Handle



Colours: Alucolour

Sizes: Length cut to suit door or drawer. Available for 16mm or 18mm thick doors.

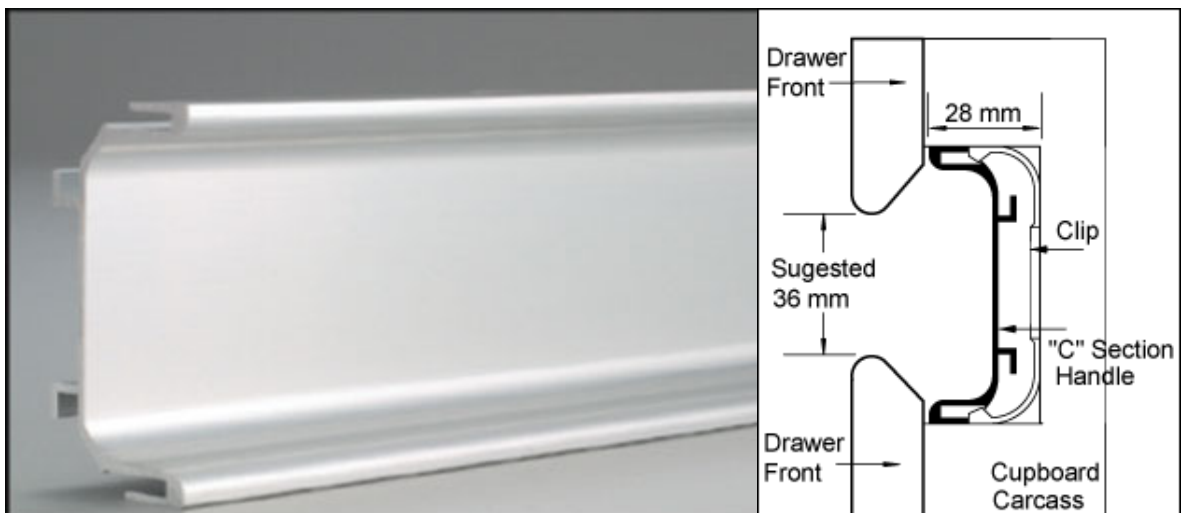
F390 Under Bench Shadowline Handle



Colours: Alucolour

Sizes: Length cut to suit door or drawer.

F369 Between Drawers Shadowline Handle



Colours: Alucolour

Sizes: Length cut to suit door or drawer.